



Nessy Learning's 'Universal Literacy' Offer



A Shared Mission: Inclusive Education for Every Learner

For more than 25 years, Nessy has supported children across the UK and around the world through evidence-informed literacy programs grounded in the Science of Reading. Used in over 190 countries, Nessy is trusted by schools, educators, and families to deliver engaging, inclusive support for reading and spelling development.

In 2024, Nessy joined the ILT Education family - a global EdTech group founded in Sweden in 1990 that now operates across the UK, Europe, and the USA, ensuring learners worldwide have access to high-quality educational content.

Together, ILT Education and Nessy work with schools, Multi-Academy Trusts (MATs), and local authorities to deliver impactful digital solutions that support literacy, multilingual learning, accessibility, and inclusion.

Our shared goal is simple: helping educators remove barriers to learning through practical, scalable, and inclusive digital tools.





Inclusion is Changing

With the introduction of the National Inclusion Standards, schools are expected to demonstrate that support is built-in, not bolted on. As the 2026 SEND reforms signal a move towards a tiered approach of Universal, Targeted, and Targeted Plus support, relying solely on specialist teachers creates an impossible challenge for schools.

This is where the Nessy learning suite enables sustainable school-wide change.

Through the universal application of Nessy's Literacy suite, schools can embed personalised, structured literacy interventions directly into the universal tier of the classroom. Tools like Nessy Reading and Spelling and Hairy Reading operate precisely at the point of need, empowering Teaching Assistants and non-specialist staff to deliver targeted support, while also enabling learners to progress independently.



'Select App' screen, showing the different Nessy Products that a student has access to.

Learning happens when it's fun

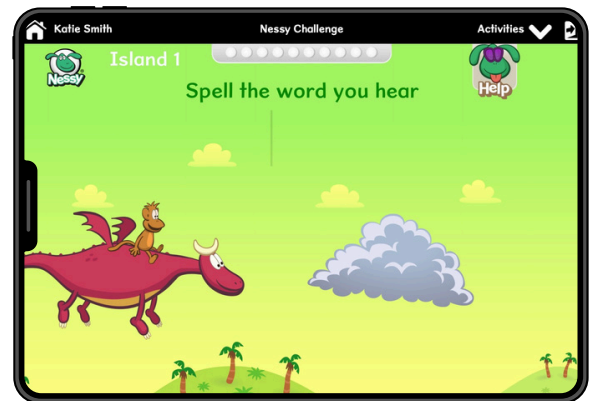
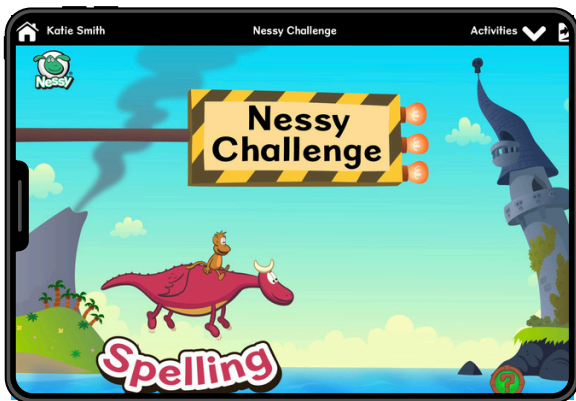




Effective Inclusion Must be Adaptive

The Nessy suite utilises built-in assessments to create highly individualised learning journeys. Instead of a one-size-fits-all model, the platform automatically targets and closes specific gaps in decoding, phonology, and spelling. As a student develops with the program, the pathway adapts, ensuring that learning is always pitched at the optimal level to secure progress and build confidence.

This adaptability is powered by being fundamentally data-driven.



Students begin by taking the Nessy Challenge to establish their baseline reading and spelling skills. The program then automatically assigns personalised reading and spelling target lessons.

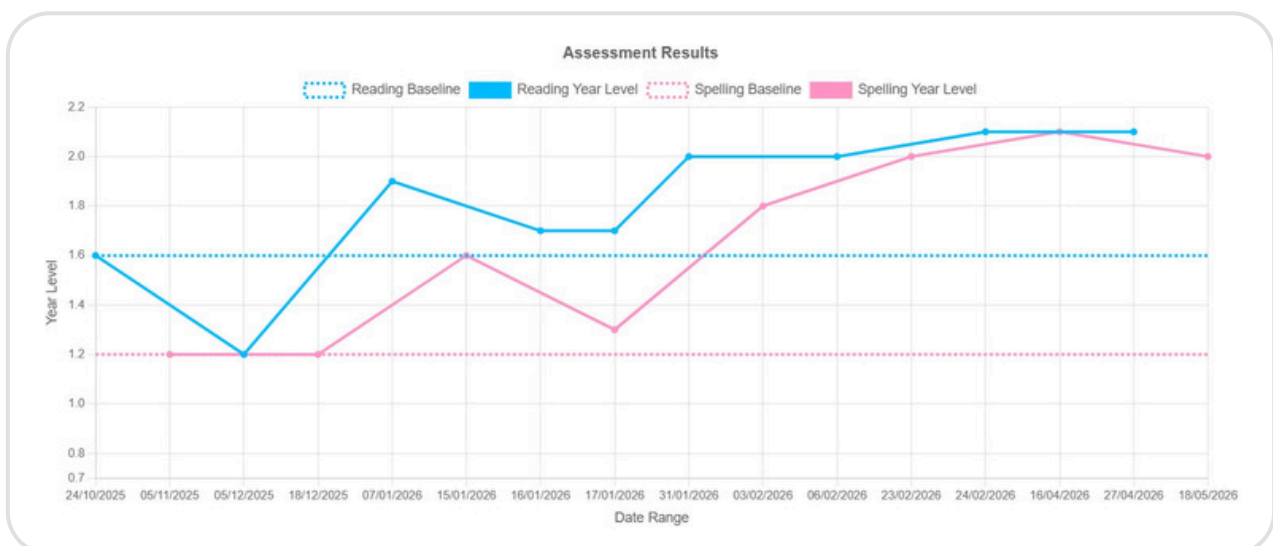


Through Nessy Classroom, educators are equipped with comprehensive reporting and monitoring features. Teachers and school leaders can:

- Instantly view individual and group learning data.
- Receive automated weekly reports to track engagement and progress.
- Export data to inform wider school improvement plans, evidencing their inclusion strategy and share for SEND reviews.

This data-driven architecture removes the guesswork.

It allows school leaders to deploy responsive teaching strategies, monitor the exact impact of their provision, and ensure that the new mandates for schools translate into tangible, equitable success for every learner.



Data captured from assessments on the Nessy platform showing pupil progression vs baseline levels.



How Does it Make an Impact?

The Nessy offer is rigorously anchored in the Science of Reading, focusing on structured, cumulative, and explicit synthetic phonics. Supporting over 5,000 schools globally, Nessy provides the capacity and direction for Teaching Assistants (TAs) and non-specialist staff to deliver precision interventions. Learning is structured, sequential, engaging, and highly motivating, ensuring that children build automaticity through gamified repetition.



Why Now?

- **National Inclusion Standards:** Provides the digital architecture required to demonstrate that inclusive support is "built-in" to the classroom, meeting the new DfE mandate.
- **Home-School Continuity:** Ensure high-quality literacy learning follows the child home, supporting "Parents as Partners" and narrowing the disadvantage gap.
- **Cost-Effective Scalability:** Whole-site licences offer the best value, allowing leaders and practitioners to align instruction based on "stage, not age" and leaving no child to wait for support.



Designed to meet the immediate systemic challenges faced by Local Authorities, MATs and schools across England, the 'Universal Literacy' offer provides a cohesive literacy pathway that supports keeping up in school, as well as bridging the gap between home and the classroom.

Meeting the Inclusion Mandate

The DfE white paper 'Every Child Achieving and Thriving' has rewritten expectations, introducing National Inclusion Standards that require support to be built-in, not bolted on. Our digital architecture allows schools to embed tools into the "universal" tier that seamlessly travel with the child for "targeted" intervention, meeting the new mandate and putting support in place before a formal assessment is in process.

Addressing the SEND Lottery

With the 2026 SEND reforms introducing a tiered approach (Universal, Targeted, and Targeted Plus), the shortage of specialist teachers remains a postcode lottery. Nessy mitigates this by providing structured literacy interventions that act as specialist support precisely where and when it is needed.

Home-School Continuity

To combat the stubbornly high disadvantage gap, Nessy (as well as all ILT Education tools) provide school-to-home continuity, ensuring that high-quality learning follows the child home and supporting teachers to actively engage parents as partners in learning.



What's Included Within the Offer?



The Nessy Inclusion Bundle brings together four complementary tools designed to support schools in delivering inclusive, evidence-informed literacy provision at both universal and targeted levels.

Together, these programs provide a cohesive pathway that supports early identification, personalised intervention, pupil independence, and staff development - helping schools build sustainable literacy support that is embedded into everyday practice.

Combined, these tools help schools move beyond isolated interventions towards a connected literacy strategy, enabling earlier support, more consistent provision, and improved outcomes for all learners.

Read on to learn more about each product.



Structured Phonics

Reading Program with

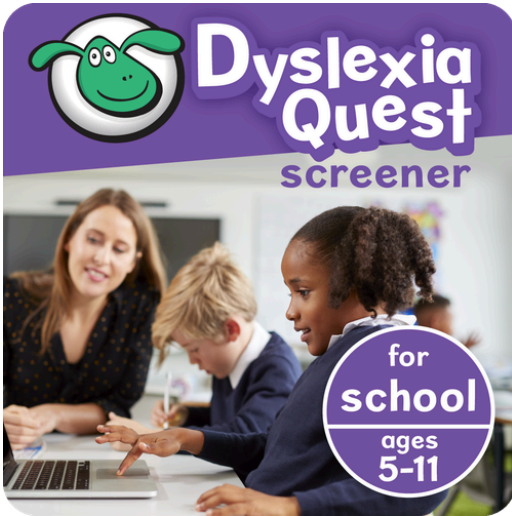
Decodable Books

For ages 4-6

Individualised Early Reading: **Hairy Reading** is an engaging, game-based approach designed for pre-readers and novice decoders to build essential literacy foundations. It develops phonological and phonemic awareness, letter formation, and decoding through systematic instruction and decodable books. By providing support at the universal tier, it reduces the risk of progress dips and the need for more intensive later interventions.

Key Features

- **Curriculum Alignment:** Aligned to DfE-Validated SSPs and following the principles of the Science of Reading to effectively narrow the gap for struggling readers.
- **Skill Development:** Focuses on identifying, blending, and segmenting phonemes, alongside grapheme-phoneme correspondences.
- **Resources:** Sequenced learning journeys, systematic phonics instruction via decodable books, and letter formation exercises for fine motor development.



A Quick Screener to

Identify Children at Risk

For Dyslexia

For ages 5-11

Universal Screening: **Dyslexia Quest** provides a quick, game-based screener for ages 5–11. Available to the entire cohort, it identifies risk indicators in phonemic awareness and working memory in just 20 minutes, allowing for timely intervention without the anxiety of a formal test environment, and is endorsed by the British Dyslexia Association.

Key Features

- **Anxiety-Free Assessment:** The assessment is disguised as ‘Yeti Mountain’, a fun game designed specifically to reduce test anxiety.
- **Comprehensive Metrics:** Game-based tests measure rapid automatized naming (RAN), working memory, and phonological awareness.
- **Actionable Data:** Generates a screening report that quickly identifies at-risk children, empowering schools to implement timely, targeted interventions before formal diagnoses are required.



Structured Literacy

for Reading and Spelling

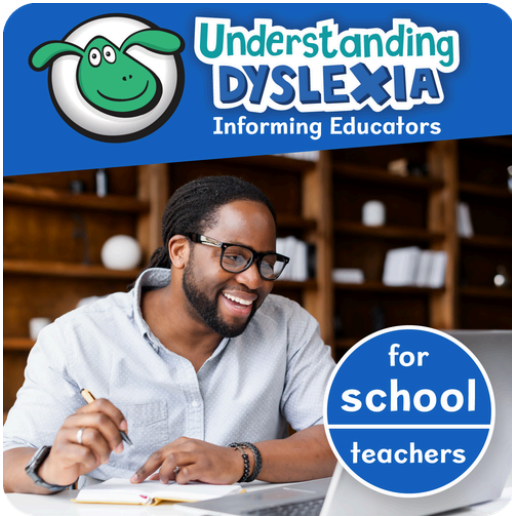
For ages 6-11

**Successfully used worldwide
since 1999!**

Adaptive Intervention: Reading and Spelling is a structured and systematic program developed over 25 years, covering early-years phonics to advanced morphology, syntax, and vocabulary. Driven by built-in assessments that automatically target lessons for each child, creating individualised journeys that adapt to each pupil's specific gaps.

Key Features

- **Scope and Sequence:** Structured lessons covering everything from early-years phonics to advanced vocabulary, morphology, and syntax.
- **Adaptive Learning:** Features built-in assessments to create individualised learning journeys that automatically target and close gaps in decoding and spelling.
- **Multisensory Instruction:** Utilises hundreds of instructional videos, interactive games, and printable worksheets to support multisensory learning and additional practice.



A Short Course

To Understand the Basics

Of Dyslexia

For Teachers

School-wide Professional Learning: [Understanding Dyslexia](#) provides practitioners with the knowledge required to support learners effectively. The program focuses on how to accurately recognise dyslexia and implement practical, evidence-based strategies within their settings. Upon completion, practitioners receive an evidence certificate.

Key Features

- **Evidence-Informed Practice:** A short course designed for teachers to learn the basics of dyslexia, grounded in proven research and aligned with the Science of Reading.
- **Identification & Intervention:** Teaches practitioners how to recognise potential dyslexia and implement practical, classroom-based intervention strategies to support learners effectively.
- **Certified Excellence:** Upon completion, practitioners receive a certified completion certificate, validating their expertise and supporting a high-impact, whole-school approach to SEND and literacy.



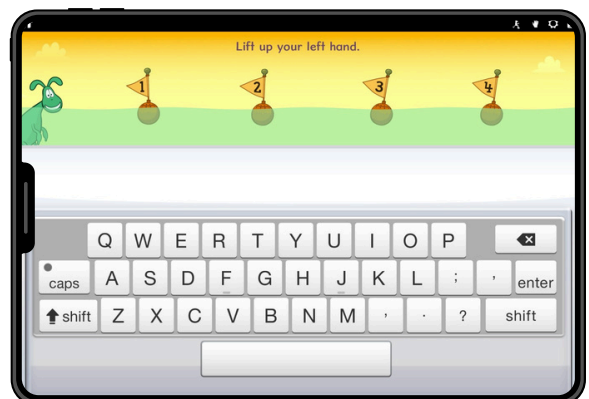
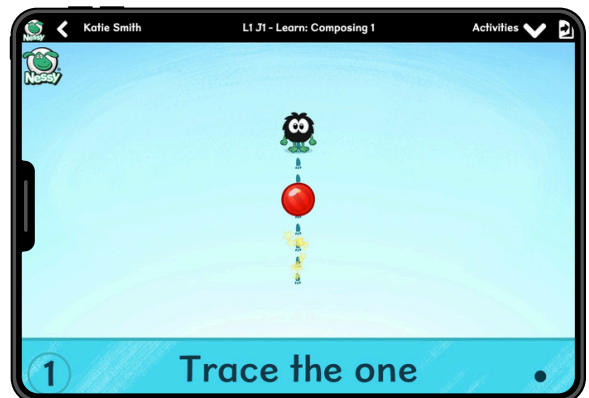
Pricing for Schools

Students/Pupils and Licences	Cost to purchase all 4 products Individually	Literacy Site Licence	% Saved
< 50 All Programs	50 Children £2,175	£745	65.7%
51 - 150 All Programs	150 Children £4,612.50	£845	81.7%
151 - 300 All Programs	300 Children £8,175	£995	87.8%
300+ All Programs	600 Children £13,950	£1,195	91.4%



Other Nessy Products

- **Writing Beach** engages students with complex grammar and conjunctions through a step-by-step digital and physical approach, bridging the gap between decoding and expressive writing.
- Developed by expert Chris Woodin, **Number Sense** uses whole-to-part multisensory processing to secure addition, subtraction, and multiplication skills, specifically designed for those who struggle with traditional abstract maths.
- **Nessy Fingers** introduces keys alphabetically to support learners with dysgraphia and ADHD, improving typing speed while reinforcing school spelling lists.

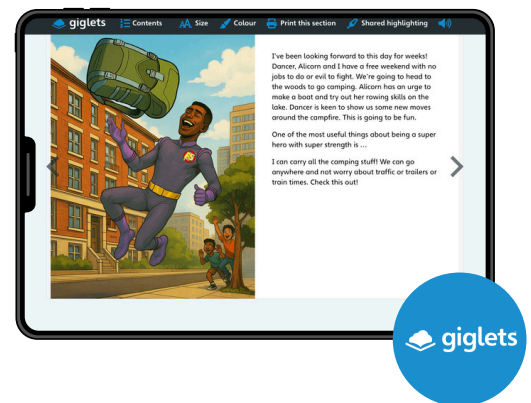
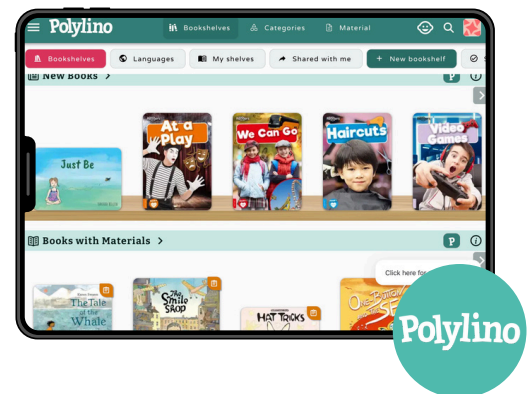




Bridging the Gap

ILT Education UK provides a cohesive literacy pathway that extends beyond isolated software solutions to bridge the gap between school, home, and community. Our ecosystem supports oral language foundations, multilingual learners, and older students requiring age-appropriate, evidence-based interventions.

- **Polylino** is a multilingual digital picture book service for early years settings and lower primary school classes, providing instant access to hundreds of books which can be listened to in over 68 languages.
- **Giglets** is an engaging literacy platform with diverse texts and curriculum-aligned tasks that offers a flexible toolkit for teachers, support staff, and leaders seeking to foster purposeful reading practice and language development.
- **Aski Raski** is a tool for intensive reading training. Students learn to crack the code of English systematically through listening, finding, writing and reading exercises.





Featuring George Athanasiou
Educational Consultant
responsible for ...

Upcoming Webinars

The Nessy offer is rigorously anchored in the Science of Reading, focusing on structured, cumulative, and explicit synthetic phonics. Supporting over 5,000 schools globally, Nessy provides the capacity and direction for Teaching Assistants (TAs) and non-specialist staff t

School Focused Webinar

The Nessy offer is rigorously anchored in the Science of Reading, focusing on structured, cumulative, and explicit synthetic phonics. Supporting over 5,000 schools globally, Nessy provides the capacity and direction for Teaching Assistants (TAs) and non-specialist staff to deliver precision interventions. Learning is structured, sequential, engaging, and highly motivating, ensuring that children build automaticity through gamified repetition.

Save your space

MAT Focused Webinar

The Nessy offer is rigorously anchored in the Science of Reading, focusing on structured, cumulative, and explicit synthetic phonics. Supporting over 5,000 schools globally, Nessy provides the capacity and direction for Teaching Assistants (TAs) and non-specialist staff to deliver precision interventions. Learning is structured, sequential, engaging, and highly motivating, ensuring that children build automaticity through gamified repetition.

Save your space



Get in Touch with Nessy

We would be delighted to set up a consultation and arrange a free trial of our platforms for your school to demonstrate measurable impact.

Click the button below to visit our website and register your interest, or use the contact information below to get in touch directly.



Click Here



EMAIL

schools@nessy.co.uk

PHONE

01179 239 777

Book a Meeting